



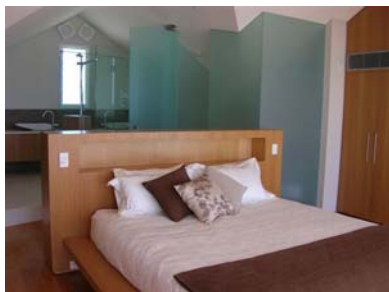
## *Luxury Short-Term Accommodation for Families & Executives*



### Marine Parade Luxury Beach House

Enjoy a relaxing unforgettable stay at this luxuriously appointed 3 level contemporary **beachfront** house located directly opposite Cottesloe Beach.

The house accommodates up to 6 people comfortably on three levels with 3 bedrooms, 3 bathrooms & open plan living/dining area. Facilities include:



- Tri-level home with outstanding panoramic ocean views & high quality furnishings, directly opposite the beach.
- Two king size bedrooms with ensuite bathrooms
- Third bedroom with two king single beds.
- Each bedroom with reverse cycle aircon
- Luxury gourmet kitchen with modern appliances including microwave, dishwasher, stove top, oven.
- Open plan kitchen, dining & living area with reverse cycle air-con & spectacular ocean views
- Wireless internet connection
- Separate office with desk space for 2 people
- 2 x TV/DVD incl a plasma TV
- Foxtel
- Rear courtyard with water feature, BBQ & outdoor seating
- Full laundry facilities
- Single carport plus double front driveway

## Photo Gallery



## Location

The house is ideally located on Marine Parade in the heart of prestigious Cottesloe.

Features of the location include:

- Across the road from beautiful Cottesloe beach
- A short walk to Cottesloe's famous restaurants, cafes & bars
- A 10 minute walk to the Fremantle-Perth railway line
- Train to Perth (20 mins) or Fremantle (8 mins)